

SEND Newsletter

Inclusion in Leicester City



Developing places for children with SEND in Leicester City

As schools and families know, Leicester has experienced a shortfall in places for children and young people with SEND and an EHCP, based on requests for places over the last 3 or 4 years. Parents and carers have been consulted, through the Parent and Carer forum, and an on-line survey on the Local Offer.

Announced by Councillor Sarah Russell, (pictured) the City has developed 60 new places at a range of our special schools, including:

- Ellesmere
- Millgate

Contents:

SEND places	New special places developing and opening in the City
SEND Services Development	Development in SEND support services in the City
SEND inspection	In May, the City had an OfSTED/CQC inspection- find out more

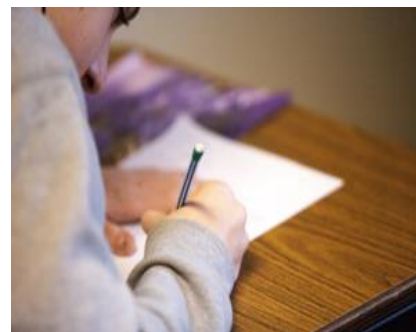


Place expansion

- Oaklands (A DSP at Barley Croft)
- Netherhall and West Gate

Between the current school year and 2025, Leicester's school age population is growing rapidly, and is set to increase from c 53,000 currently, to 64,000. This is likely to include a proportionate number of specialist places, which we currently estimate to be 285.

Because of this need, and our recent SEND local area inspection, our focus is upon creating capacity in both mainstream and special schools. In June, the City Council asked for expressions of interest for DSPs (Designated Special Provision) attached to mainstream schools. Many schools applied for these new provisions for SEMH and communication & interaction. Schools have been highly creative and innovative in their response to meeting place needs. See next steps below.



SEND services development

SEND Support Services and the City Psychology Services have been under consideration as pressures on the High Needs Block continue to build, and with more children being identified with additional needs in the City. As a result, two consultants, Pat Bullen and Jane Friswell, have been working with the Council to consider our options for the future. When this has moved further, the Council will go through a formal consultation process to move forward.



The LA is now developing a timetable of meetings with schools who expressed an interest in developing a DSP to be opened over the next two to three academic years. Schools will be receiving letters shortly after the half term break.

Designated Special Provisions

Designated Special Provisions- DSPs- are resourced provision attached to mainstream schools, for groups of 10, 15 or 20-25 pupils. They would offer places to schools within their area, not only for pupils in their own school. We have focused upon the two highest incident areas of need- social, emotional and mental health needs - SEMH; and communication and interaction needs.

SEND local area inspection May 2018

In May, OfSTED and CQC held a joint inspection of the local area. The identified strengths and areas for development are outlined a little more below. Leicester produced a Written Statement of Action showing how improvements would be made. We will be subject to regular monitoring by the Care Quality Commission and the DfE. View the plan on the Local Offer Website or PDF below.



The areas of strength in Leicester include:

- Early Years support
- Children's health needs are identified at an early stage
- 'Let's get talking' is a useful approach which can be offered to families in their own homes
- Education, Health and Care Plans were all transferred in the right timescales and the area is above national average for the completion of EHC Plans within the 20-week period
- Most families and young people believe that their views are 'taken into account' when they are being assessed
- Local Offer Live is well regarded by families (though not yet familiar to all families)
- SENDIASS is well regarded by families and professionals, and have a good knowledge of the law and of the City
- Young people value the Connexions service and its advice and guidance

Areas for development

Inspectors found that we have more to do to:

- Fully implementing the changes within the SEND Reforms 2014
- A strategic view of how we can improve outcomes for children and young people experiencing SEND
- The quality of outcomes within our Education, Health and Care Plans need to improve, as do social care contributions within them
- The transition from children to adult health services needs to improve further
- The local area has plans to improve Preparation for Adulthood outcomes, but they are not yet improving swiftly enough

The LA and CCG (Clinical Commissioning Group) has now developed an Action Plan response (below), which has now been approved by the inspectors, and should provide a platform for improvement.



Meeting the Challenge of Inclusive Education in Leicester City

Inclusion Workshop

We were delighted to welcome over 50 people to an inclusion workshop at New Parks House on Tuesday 16th October.

After the initial context setting there was some lively discussion on inclusion in Leicester. We will follow the workshop with a task and finish group to put together an action plan for increasing inclusion in Leicester City Schools.

If you couldn't be there but would like the notes or be part of the task and finish group please get in touch.

vicki.urch@leicester.gov.uk



Contact Details

Joe Dawson, Head of Service, SEN & Disabilities

joe.dawson@leicester.gov.uk